

Brief Introduction of Battery Augmentation


About This Document

This document mainly introduces how to add new battery modules in the system. If relevant documents are needed, please visit <http://support.sungrowpower.com/>.

All related operations can only be performed by professional technicians. The professional technician shall have received specific training and be familiar with local standards and relevant safety regulations of electrical systems.

Battery Module Augmentation

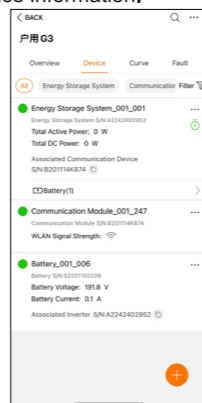
- Follow steps 1-6 to remotely charge and discharge the batteries at the plant site to ensure that the SOC of these batteries is consistent with that of the new modules to be added.
- The following conditions must be met to use the battery augmentation function
The iSolarCloud App version should be V2.1.6.20220715 or later.
The battery version should be V12 or later .
The inverter model should be SHRS series and the version should be later than Sunstone-H_01011.02.27 (LCD).

Step 1 Open the iSolarCloud App, tap  in the upper right corner of the screen, tap "Select Server", and select the correct server.

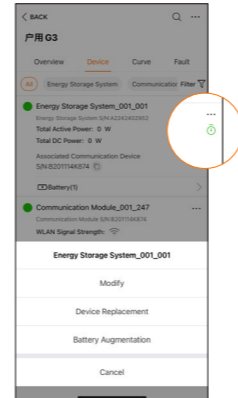
Step 2 Enter the installer account and password and tap "LOGIN".



Step 3 Select the plant with target battery to be expanded in capacity and tap "Device" to get the device information.

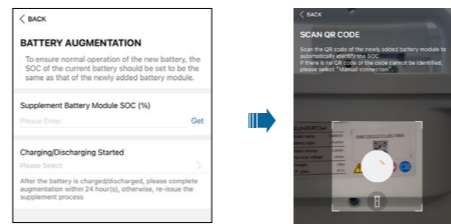


Step 4 Tap  at the top right of the corresponding device and select "Battery Augmentation".

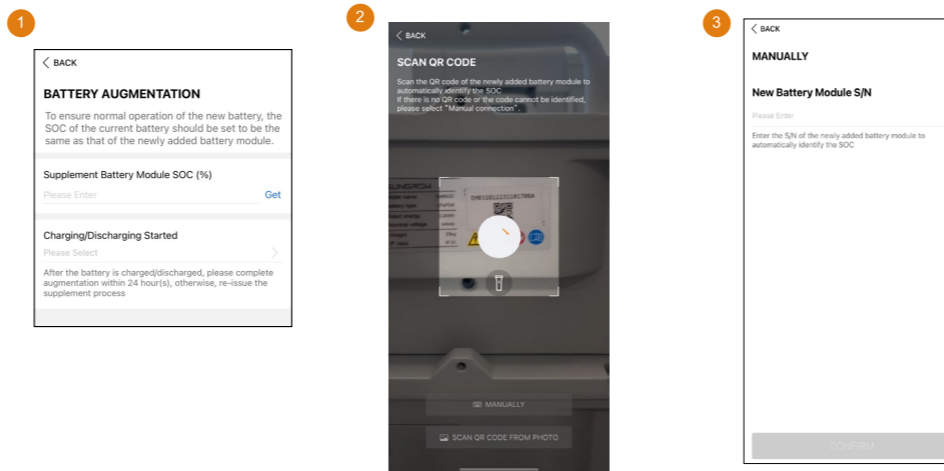


Step 5 Obtain the SOC of new battery modules by scanning the QR code or manually entering device S/N.

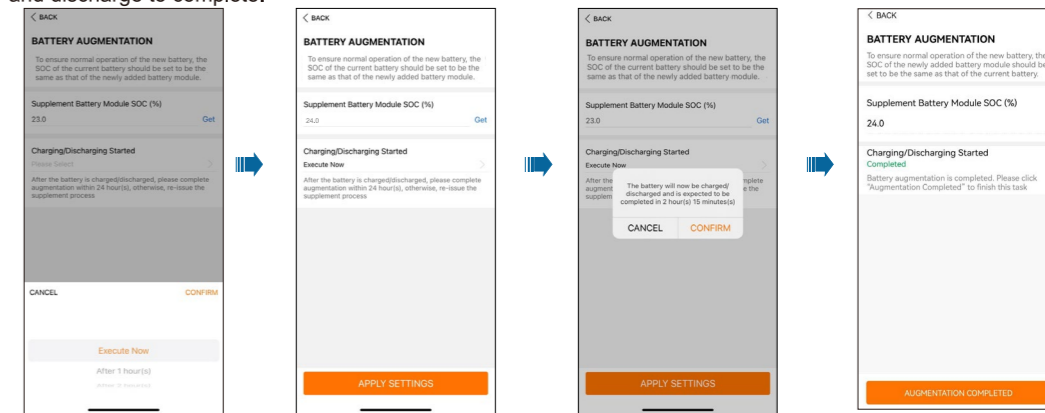
Method 1 Tap "Get" to enter the code scanning screen. Scan the QR code on the battery module to obtain the SOC.



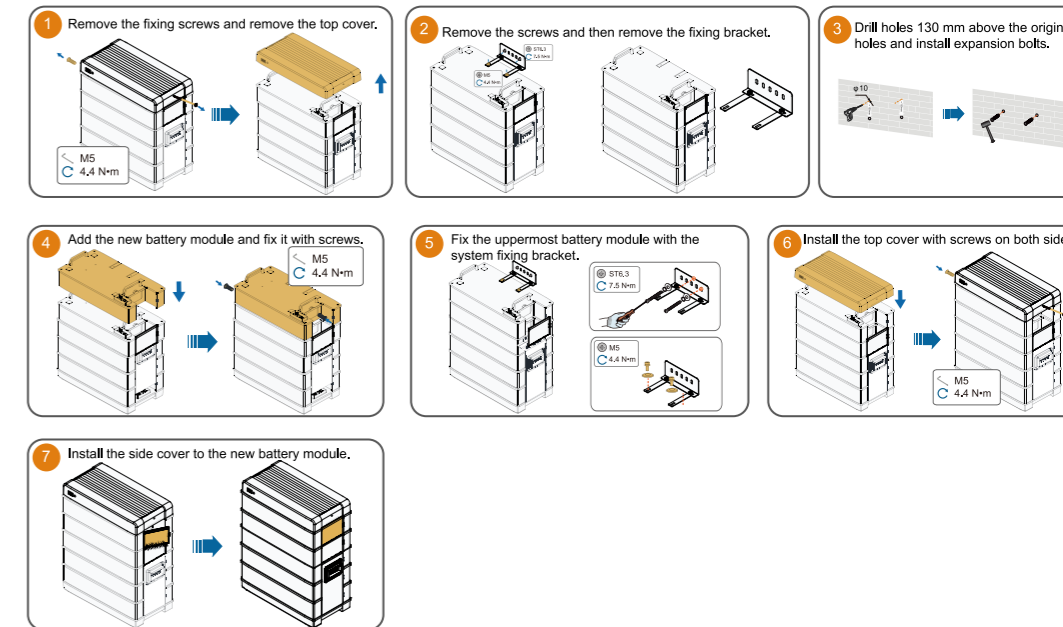
Method 2 Tap "Get" to enter the code scanning screen, tap "Manually", enter the corresponding S/N under "New Battery Module S/N", and tap "CONFIRM".



Step 6 Tap "Charging/Discharging Started" to set the start time, and tap "Execute Now" to wait for the charge and discharge to complete.



Step 7 Power down the system following the commissioning steps in the battery manual. Install the new battery after the system is completely powered down.



Step 8 Check the battery base to ensure that the battery is placed steadily after the new battery module has been added. Reactivate the battery referring to Chapter Commissioning in the battery user manual and check whether the battery operates properly. Restore the battery waterproof cover, awning (if there is), etc.

* If the SOC cannot be obtained by the preceding methods, manually enter 24.